

EM-TU Sağlık Diz Protezi
Chunli Medical: 01858.HK



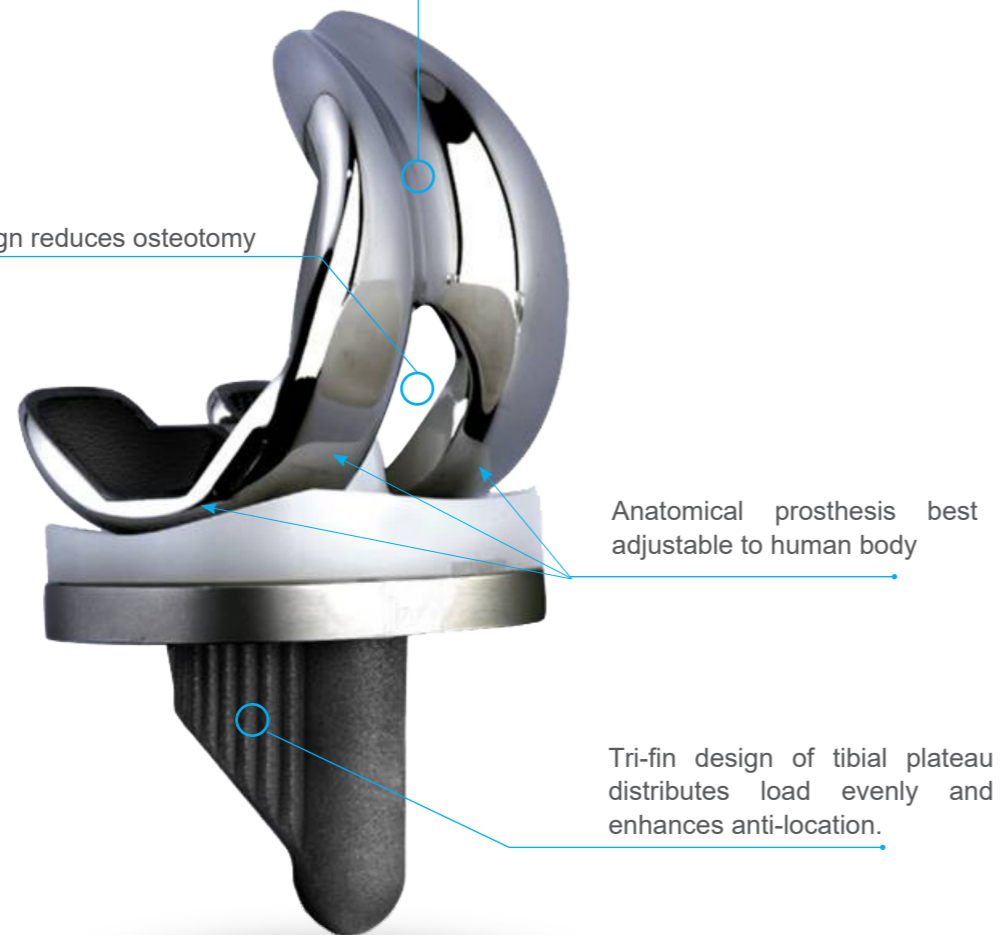
 T-fri®

XM Knee System

T-Free I XM Knee System

Deeper trochlear recess enables good contact with patella when taking high flexion and prevents dislocation

Open intercondylar design reduces osteotomy



PS

CR

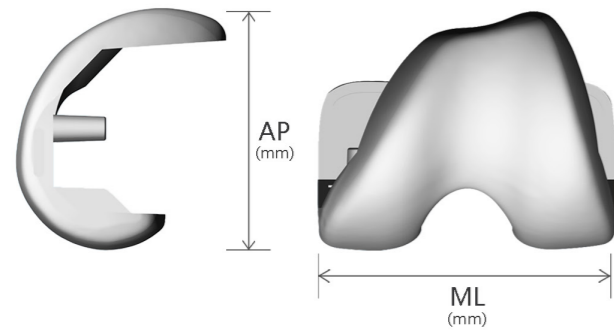
Features:

- Combination of international advanced design philosophy and anatomical bone features of the people of multi-countries.
- Anatomical prosthesis best adjustable to human body
- Open intercondylar design reduces osteotomy
- Deeper trochlear recess enables good contact with patella when taking high flexion and prevents dislocation
- Single radius of tibial insert and femoral condylar effectively increases contact area and assures the motion stability of ligaments
- Tri-fin design of tibial plateau distributes load evenly and enhances anti-location
- Provide PS and CR prosthesis; various sizes available
- Precise, simple and practical instruments.

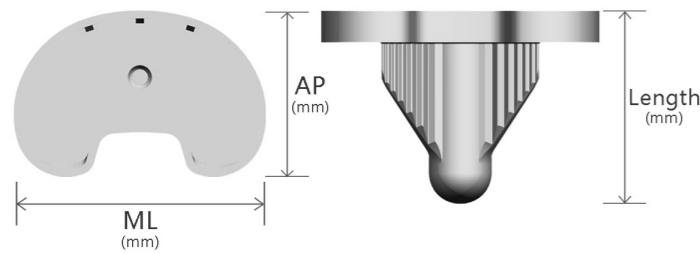
Application:

Application in primary total knee surgery

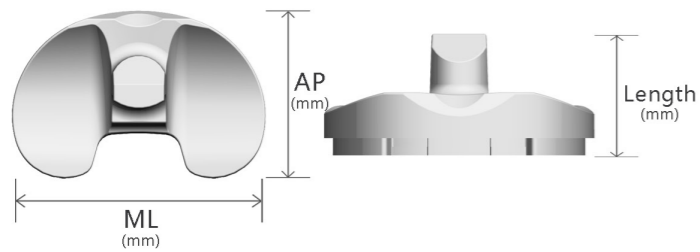
- Rheumatoid arthritis;
- Osteoarthritis;
- Ankylosis of the knee;
- Other knee disease which adapt to surface knee replacement;



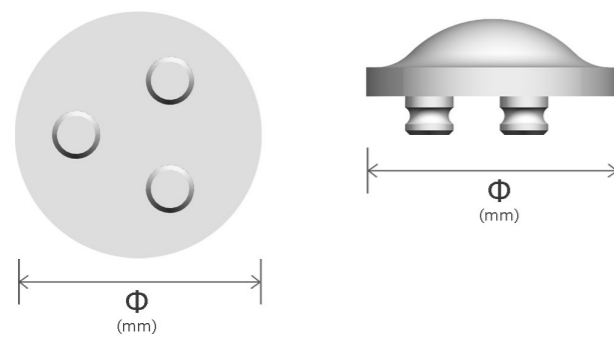
| Femoral Condyle | | |
|-----------------|----|----|
| | AP | ML |
| 2# | 52 | 57 |
| 3# | 55 | 60 |
| 4# | 57 | 62 |
| 5# | 60 | 65 |
| 6# | 62 | 67 |
| 7# | 65 | 70 |
| 8# | 67 | 72 |
| 10# | 71 | 77 |



| Tibial Tray | | |
|-------------|----|----|
| | AP | ML |
| 2# | 41 | 62 |
| 3# | 42 | 65 |
| 4# | 43 | 67 |
| 5# | 44 | 70 |
| 6# | 45 | 72 |
| 7# | 47 | 75 |
| 8# | 49 | 77 |
| 10# | 52 | 81 |

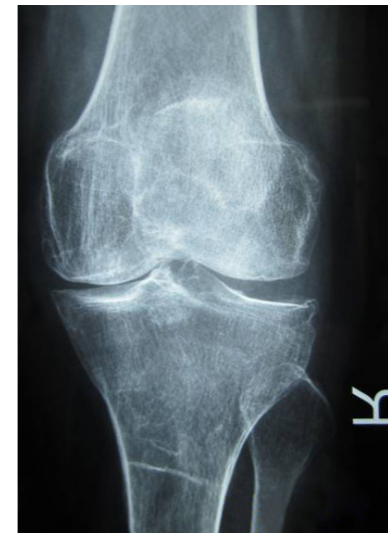


| Tibial Insert | | |
|---------------|----|----|
| | AP | ML |
| 2# | 41 | 62 |
| 3#、4# | 43 | 67 |
| 5#、6# | 45 | 71 |
| 7#、8# | 49 | 76 |
| 10# | 52 | 81 |



| Patella | | |
|----------|-----------|--|
| Diameter | Thickness | |
| 26 | 8 | |
| 29 | 10 | |
| 32 | 12 | |
| 35 | | |

X-Ray



Instruments Set

